



MICROSYS

PowerPlay™

Test Analysis Software

The screenshot displays the PowerPlay software interface. The top window shows a video frame of an airbag deployment with a 'Tools' menu open, highlighting 'Time Zero'. Below it, a sensor data window shows a graph of pressure (psf) vs. time (SEC) for a pressure transducer. To the right, a 'PowerPlay Airbag Test Report' is shown, detailing test parameters and sensor readings.

PowerPlay Airbag Test Report		Main Page	LOT Number:
Test File Path	C:\Documents and Settings\amy\Desktop\Test Data Sample\Marketing\Airbag\Honda airbag in		Field 13
Test ID	011108-1638--Acceptance test No 1\TS	Ambient Temperature	75.6 °F
		Ambient Humidity	35 %RH
Serial Number:		Module Type:	
Acceptance test # 1	N/A	Initiator Serial Number:	
Operator:		Module Temperature:	MT1 A
		Test Number:	
MICROSYS			
Start of Test:	Nov-08-2001 - 04:38:PM	Comments:	Ready to test.
		Post Deploy Comments:	Successful test 1
GRAPH 1 NAME	011108-1638-Squb 1 Current Sense	GRAPH 2 NAME	011108-1638-Squb 1 Voltage Sense
DETAILS OF GRAPH 1		DETAILS OF GRAPH 2	
	UNIT		UNIT
	V I A		V I V
	X SEC		X SEC
Graph 1		Graph 2	
COMMENTS	Sqp #1 Current sensor readings.	COMMENTS	Sqp #1 Voltage sensor readings.
GRAPH 3 NAME	011108-1638-Squb 2 Current Sense	GRAPH 4 NAME	011108-1638-Squb 2 Voltage Sense
DETAILS OF GRAPH 3		DETAILS OF GRAPH 4	
	UNIT		UNIT
	V I A		V I V
	X SEC		X SEC

- Compare multiple tests, camera views and sensor data, all time synchronized
- Sophisticated image enhancement and AVI creation tools
- Combine multiple video and sensor windows to create a single "multi-window" AVI file
- Customizable test reports

PowerPlay™ Test Analysis Software

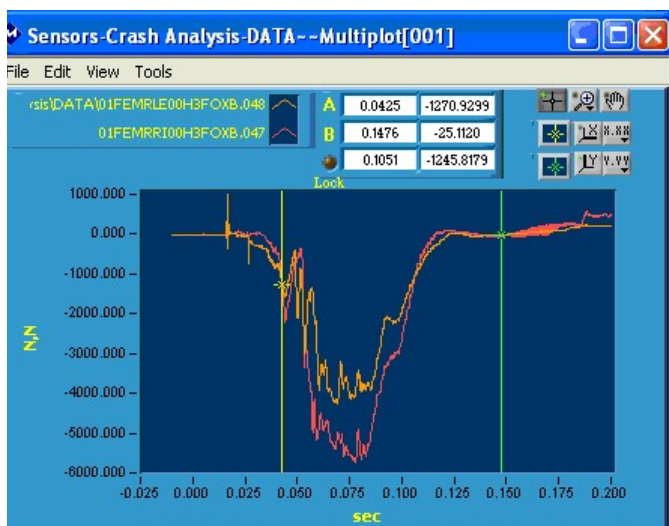
Description

Microsys PowerPlay software is a powerful data analysis and data processing tool. It can be used for post processing and automated reporting.

Specifications

- Synchronized video data and sensor data playback
- Unlimited number of video windows and sensor windows
- Report generation using Microsoft Excel templates
- Search and recall of test data from the SureFire test results database

Performance: Sensor Functions



- Single trace graphs; multiple trace graphs; X vs. Y graphs
- Adjust X and Y axis format and precision, graph ranges
- Time clip sensor files to remove unneeded data
- Time zero adjustment
- Dual cursors with time and amplitude readouts
- Import and export to DIAdem Real 64 data format
- Sensor file types supported: CSV and ISO-13499

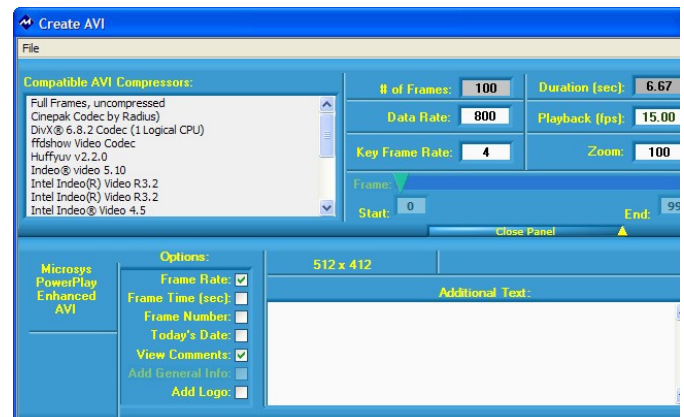
Math functions:

- SAE J211 filters, integration, differentiation, SQ, SQ RT, Power, EXP, INV, LN, ABS, SIN/ASIN, COS/ACOS, TAN/ATAN
- Constants: +, -, X, ÷

Statistics:

- minimum, maximum and average for total time or displayed time

Performance: Video



- Enhance images by adjusting red, green, blue, brightness, contrast, gamma
- Single click white balance
- Save and recall of image enhancement settings
- Image sharpen, soften, edge detection and edge enhancement
- AVI creation: set start & end frames, region of interest, control size, quality and play speed



- Enhanced AVI creation: add an information banner, comments and logo to the AVI file
- Create multi-window AVIs that combine multiple video and sensor graphs into a single AVI file (with the Multi-Window AVI toolkit)
- Batch AVI file creation
- AVI to single image conversion
- Calibrated linear and angular image measurements
- Image rotation
- Region of interest zoom: Size zoom - 25 % to + 1 000 %
- Export of image enhanced frames
- Time zero (T0) adjustments for video and sensor data
- Video file types supported: JPEG, TIFF, AVI, BYR, MPG, BMP, GIF, CIN